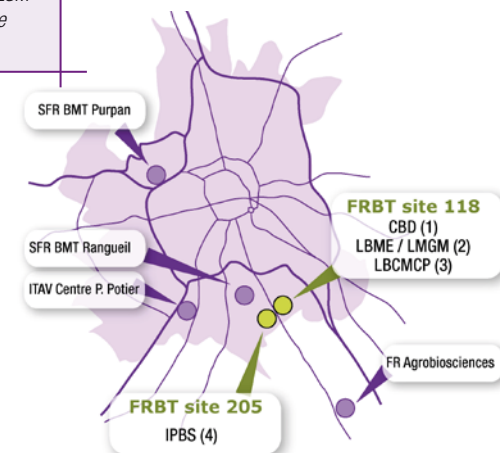


Plateforme Imagerie - FRBT



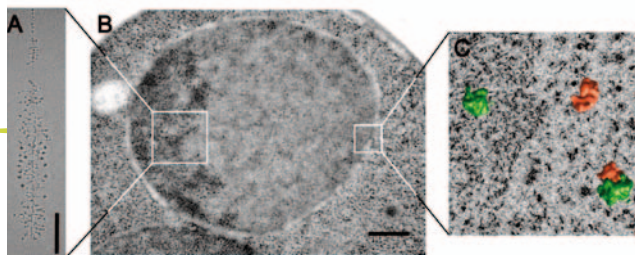
>> Scientist at Zeiss LSM 710 / 7MP microscope



The imaging platform of BioRFT provides the environment, equipment, expertise and staff for all research projects that require modern imaging technologies. The platform is operated through 8 engineers and includes a large variety of imaging equipments, from the single molecule to the whole body (optical microscopy, electron microscopy and flow cytometry)

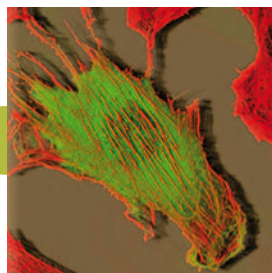
The imaging platform is opened without restriction to all partners in research and development, academic or private industry. It offers various services including counseling, initial training for free access to the equipments, collaborative contracts and industrial partnerships.

Visualisation des fonctions biologiques de l'échelle nano à l'animal entier



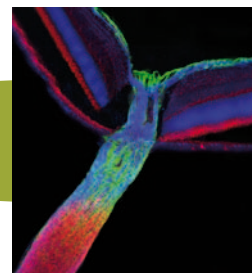
Transmission electron microscopy of macromolecules and cells, electron tomography, cryomethods, cryo-TEM, electron spectroscopy imaging (2)

>> Multi-scale analysis of ribosome biogenesis in yeast *Saccharomyces cerevisiae* by transmission electron microscopy (© I. Léger, O. Gadal, C. Plisson, P-E Glezes)



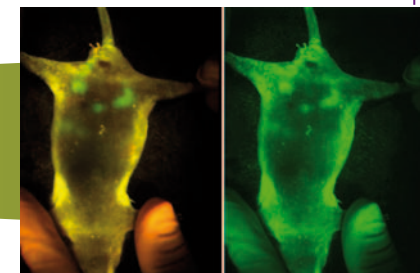
Wide-field microscopy (1-4), image deconvolution(1), laser photoablation(3), photomanipulation (optical tweezers)(3)

>> 3D view with wide field microscopy followed by deconvolution of actin and moesin in a 3T3 fibroblast (© F. Payre, C. Polesello, B. Ronsin)



Confocal(1-4), spinning disk(2), multiphoton microscopy with FLIM(1,4)

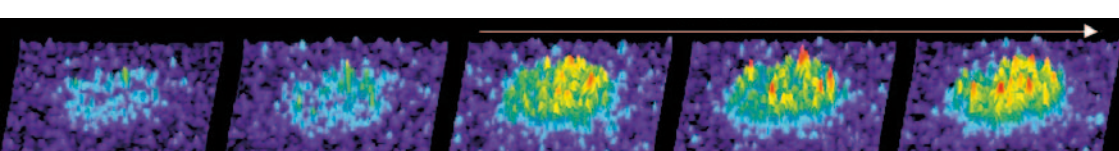
>> Three color confocal imaging of early retina and optic nerve (© P. Cochard and C. Soukkaie)



Tissue and whole body fluorescence imaging, intravital microscopy, multiphoton microscopy with FLIM (4)

>> Wide body fluorescence imaging of PC3-GFP tumours in mice with hyperspectral analysis (©M. Golzio, J. Teissié, O. Cuvillier)

Numbers in brackets refer to the laboratories hosting the equipment shown in the above map



>> TIRF imaging of calcium channel activation in Th2 lymphocytes (© M. Moreau, L. Pelletier)

Microspectrofluorimetry(1,4), FLIM, FRAP, FRET, BRET, TIRF(1,4), Single particle tracking (4)

Partner site of TRI Cell Imaging Platform / Genotoul



The BioRFT imaging platform constitutes the core of the Regional Cell Imaging Platform TRI (Toulouse Imaging Network). It is recognized at the national level (IBISA label) and operates according to quality management standards (ISO9001).